



**A NOTE FROM TEP ROCKY MOUNTAIN LLC**

TEP Rocky Mountain LLC, (TEP), formerly WPX Energy, operates and maintains natural gas pipelines with diameters ranging from 2 - 24 inches in diameter, located in Garfield and Rio Blanco Counties in Colorado. The natural gas that TEP produces within the Piceance Basin is an important source of energy for both Garfield and Rio Blanco Counties, the State of Colorado, and the United States. As the largest natural gas producer in Colorado, TEP is committed to safely operating pipelines and natural gas facilities with the surrounding communities. You are receiving this safety information because you live, work, or are a first responder near our pipelines. Please take a moment to review this information and keep it handy in case you need to reach us.

**ABOUT OUR PRODUCT**

Natural Gas is lighter than air and will generally rise and dissipate. It may gather in a confined space and travel to a source of ignition. TEP's pipelines transport natural gas from our producing well locations to a 3rd party gas processing facility where it is then odorized and distributed for use in homes, businesses, power generation, or other industrial uses. The natural gas produced by TEP provides the equivalent utility demand for over 2.4 million homes per day.

**DAMAGE PREVENTION**

Most pipeline accidents occur when individuals are not aware of a pipeline's location before they begin excavation. You can help prevent pipeline incidents by contacting your state one call agency before you dig. One easy phone call to 811 gets the approximate location of underground utility lines marked for free. For more information go to: [www.call811.com](http://www.call811.com)



**Know what's below.  
Call before you dig.**

**PIPELINE LOCATION INFORMATION**

Pipeline markers are in pipeline rights-of-way and indicate the approximate location of the pipeline but not the depth of the pipeline. On these markers you

will find the operator's name, emergency phone number and the product being transported in the pipeline.



**NATIONAL PIPELINE MAPPING SYSTEM**

To view and download transmission pipelines in your county, visit the National Pipeline Mapping System at: <https://www.npms.phmsa.dot.gov/>. This online platform is used by general public, government officials, emergency officials and pipeline operators for a variety of tasks including emergency response planning, smart growth planning, critical infrastructure protection, and environmental protection.

**LEAK RECOGNITION AND RESPONSE**

**Possible signs of a leak**

- Dead vegetation
- Bubbling or hissing sound
- Unusual smell

**Response to a leak**

- Leave the leak area immediately.
- Do not touch, breathe, or come in contact with the product.

**EMERGENCY CONTACT:**

**1-970-285-9377**

**PRODUCTS/DOT GUIDEBOOK ID#/GUIDE#:**

|             |      |     |
|-------------|------|-----|
| Natural Gas | 1971 | 115 |
|-------------|------|-----|

**COLORADO COUNTIES OF OPERATION:**

|          |            |
|----------|------------|
| Garfield | Rio Blanco |
|----------|------------|

*Changes may occur. Contact the operator to discuss their pipeline systems and areas of operation.*

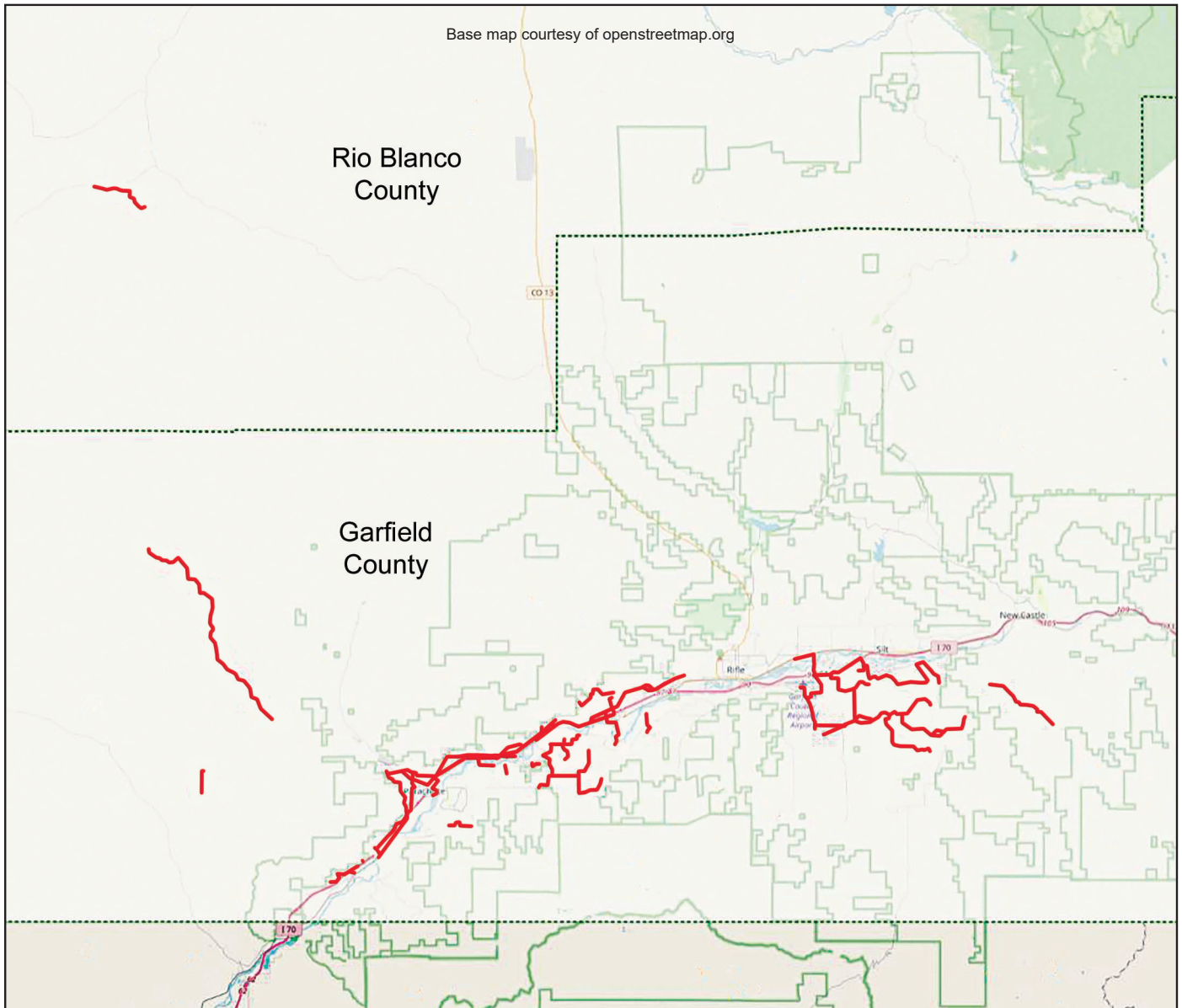
- Do not light a match, start an engine, use a telephone, switch on/off light switches or do anything that may cause a spark in the area or vicinity of the leak.
- From a safe location immediately call 911 and TEP Rocky Mountain LLC at 1-970-285-9377 and report exactly what you have seen, heard, or smelled and where this incident or event took place.
- Warn others but do so without entering or re-entering the area where a pipeline leak is suspected.

**PREVENTION MEASURES UNDERTAKEN**

TEP Rocky Mountain LLC invests significant time and capital maintaining the quality and integrity of their pipeline systems. We utilize on-ground observers to identify potential dangers.

**EMERGENCY PREPAREDNESS**

TEP Rocky Mountain LLC regularly communicates with the proper Emergency and Public officials to ensure that in the event of an emergency the proper steps are taken. If you are an agency that would like more information about this or to get a copy of the company's Emergency Response Plan, please contact 1-970-285-9377.



**CONTACT INFORMATION**

If you have additional questions or comments on public safety or TEP Rocky Mountain LLC, please contact us at 1-970-285-9377 or visit our website at <https://www.terraep.com/>.

Thank you for reading and keeping this information for future reference.

Sincerely,

TEP Rocky Mountain LLC

